

Installation Instruction

(Audi A6L 2013-2016)

Precautions

- All pictures in this manual are for reference only. Pictures and objects may differ, but the installation method is the same.
- In order to facilitate your installation, please carefully read the product manual before installation; When installing, protect your car's surface and avoid scratching.
- Please check regularly if all accessories connected with the car are loose to ensure safety.

Installation Steps

Refer to the parts list and accessory drawings to check if the accessories are complete. After the product is installed, press the tailgate button for 3-5 seconds. You will hear a sound "DI——" and then loose your hand. Press the tailgate button again and close it. You will hear two sounds. Tail gate learning is finished.



1. Remove the metal locks in the four corners of the carriage.



2. Remove the warning card buckle and take out the plastic box.



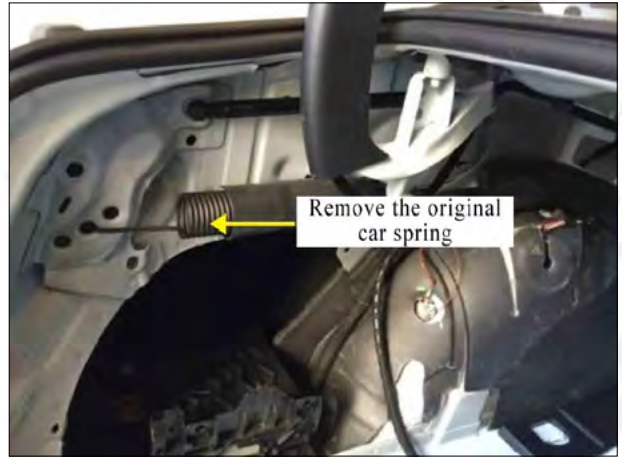
3. Remove the screws and remove the original car back trim panel.



4. Undo the button to remove the trim panel.



5. Remove the left side trim panel.



6. Remove the original car spring as shown.



7. Use a flat-blade screwdriver to pry the original car spring and remove the original car brace rod.



8. Install the screw here as shown,



9. Install our ball head.



10. Install our brace rod.



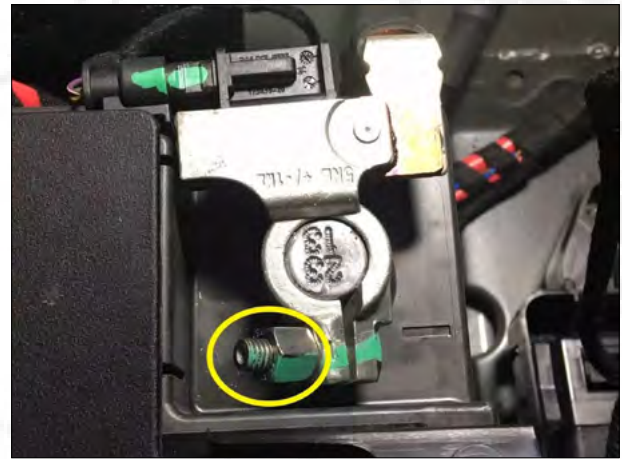
11. Close to the car body, fasten our tailgate bracket with bolts and nuts on the tailgate.



12. Take out the spare tire and find the battery.



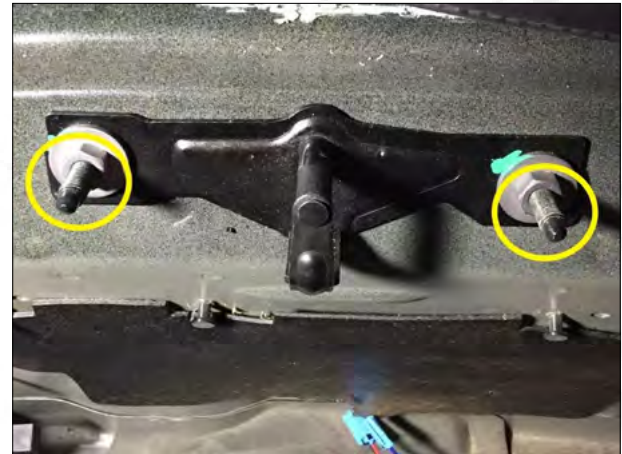
13. Find the positive battery as the power source.



14. Find the negative electrode on the right side of the positive electrode and connect the ground wire.



15. Unplug the original car socket in the tailgate lock and plug the three-way socket.



16. Remove the screws on both sides as shown in the figure and take out the original car lock.



17. Install our electric suction lock and use the original car screws to fix it.



18. Take out the screws of the motor and place the cable on the motor. (As shown in the figure).



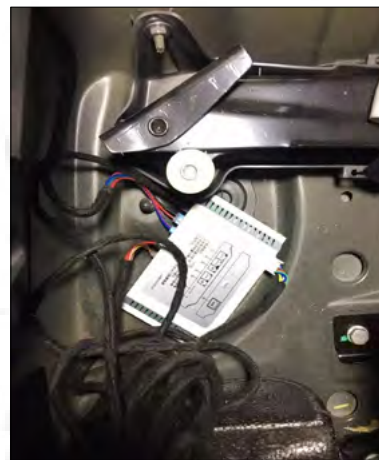
19.As shown in the figure, screw the cord to the motor.



20.As shown in the figure, the other end of the drawstring is installed in our electric suction lock.



21.Install the electric suction in the lower right coner and fix it with 3M paster.



22.As shown in the figure, the central control box is installed in the lower left corner and is fixed with our 3M paster.



23. The lock signal cable machine button line is drawn from the left side bar to the central control box.



24. Connect the original door unlocking plug with our three-way adapter socket, and insert the other end plug into the door lock position.



25. Install out tailgate switch button at the tailgate position.

After the installation is complete, you must set the tailgate learning. Make sure that the door can be opened and closed in place. (Raise the tailgate to ideal height. Then press the tailgate button for 3-5 seconds. You will hear a sound "DI——" and then loose your hand. Press the tailgate button again and close it. You will hear two sounds "DI DI". Tail gate learing is finished.) If you do not hear two sounds, learning is unsuccessful and you need to re-learn. If you can not close the door, use your hand to push the door to close when you are learning.

Disclaimer

Due to improper installation and improper use, caused the relevant issues and losses, these not include within our company 's warranty. Thanks for your purchasing our products. Please read the manual carefully before use and collect it for later reference.

Key Control Method

1. Press the original Key fobs three times to open and close the door.
2. Press the front switch button to open and close the door.

Setting Height

- 1.Raise the tailgate to the ideal height;
- 2.Press the tailgate switch for 3-5s;
- 3.When you hear a long sound "Di——", loose your hand and press the tailgate switch again to close the door.
- 4.When you hear two sounds "Di Di", Setting height is finished.

Note: Do not close the door with your hands after setting the ideal height.

Be sure to use our own tailgate switch.

Fault Solution

The original key fob does not work	Check if the yellowe central control line is connected.
Not working after installation	1.Check if the positive power supply is connected with 12V-16V. 2.Check if the power fuse is inserted. 3.Check if the ground wire is connected.
Closing the tailgate not in place The tailgate can only open to half	1.Check if the left and right bracket are installed reversed. 2.Check if the control box wire is inserted. 3.Check if the brackets are fixed with our screws. 4.There are two rubbers on the left and right sides of the original tailgate cover. Check if they are loose and need to be tightened.



All rights reserved.